



THE PURPOSE OF BAR CODE READERS IN THE HEALTHCARE INDUSTRY

The key mission of scanners in the healthcare industry is to improve the quality of patient care while reducing medication errors. Additionally, healthcare environments have requirements that scanners need to be regularly cleaned and disinfected. The Datalogic Gryphon™ HC product series is specifically developed for healthcare applications with Disinfectant-Ready enclosures treated with anti-microbial additives and are designed to withstand daily cleaning with harsh disinfectant solutions.

The Gryphon™ 4400-HC 2D readers can decode virtually any 1D and 2D bar code symbology and can read codes from LCD monitors, cell phones, smartphones and other mobile devices. Enhanced optics offer improved motion tolerance and high speed imaging to read fast moving codes as well as the ability to capture images such as signatures, complete IDs or prescriptions.

Ideally suited for stationary applications in administration, laboratory and hospital environments, the GD4400-HC 2D desktop model offers an affordable corded solution, while the GM4400-HC 2D or GBT4400-HC 2D cordless models (STAR or Bluetooth®) provide extended mobility for cordless operations.

The deep-red illumination of the Gryphon 4400 2D imagers eliminate the irritating 'flicker effect' found in competing products, allowing for comfortable all-day usage. The highly visible 4-Dot aimer provides a clear indication of the reading area, making targeting codes quick and easy. Datalogic's patented 'Green Spot' technology provides additional visual good-read confirmation which is ideal for quiet environments like bedside patient care. Datalogic Aladdin™ configuration software and Remote Host Management software provide simple tools to manage deployed devices and keep them synchronized across an enterprise.



MEDITECH



ALL PRODUCTS

- Disinfectant-Ready enclosures treated with anti-microbial additives (ISO22196 and JISZ 2801 compliant models available)
- Motionix™ motion-sensing technology for seamless reading mode transitions
- Omnidirectional reading of 1D, 2D and postal codes plus stacked and composite codes
- Extremely snappy reading performance
- Extended reading distances
- Advanced motion tolerance optics
- Highly visible 4-Dot aimer with center cross for targeted scanning
- Image capture and document scanning capabilities
- Datalogic's patented 'Green Spot' technology for good-read feedback
- USB Certified Kits Available
- ISO22196 Compliant Models Available

CORDLESS PRODUCTS

- Two choices: STAR 433 / 910 MHz or Bluetooth® wireless technology
- Batch Mode capability: >1200 codes stored in memory
- Point-to-point / Point-to-multipoint transmission
- Datalogic's unique patented 2-position cradle with 'Scan-While-Charging' capability
- Long lasting user-replaceable Lithium-Ion battery

DECODING CAPABILITY

1D / LINEAR CODES	Autodiscriminates all standard 1D codes including GS1 DataBar™ linear codes.
2D CODES	Aztec Code; China Han Xin Code; Data Matrix; MaxiCode; Micro QR Code; QR Code
POSTAL CODES	Australian Post; British Post; China Post; IMB; Japanese Post; KIX Post; Korea Post; Planet Code; Postnet; Royal Mail Code (RM4SCC)
STACKED CODES	EAN/JAN Composites; GS1 DataBar Composites; GS1 DataBar Expanded Stacked; GS1 DataBar Stacked; GS1 DataBar Stacked Omnidirectional; MacroPDF; MicroPDF417; PDF417; UPC A/E Composites

ELECTRICAL

CURRENT	Operating (Typical): 160 mA @ 5 VDC; Standby/Idle (Typical): 65 mA @ 5 VDC
INPUT VOLTAGE	4.2 - 5.25 VDC

ENVIRONMENTAL

AMBIENT LIGHT	0 - 100,000 lux
DROP RESISTANCE	Withstands repeated drops from 1.5 m / 5.0 ft onto a concrete surface
ESD PROTECTION (AIR DISCHARGE)	16 kV
HUMIDITY (NON-CONDENSING)	5 - 90%
PARTICULATE AND WATER SEALING	IP52
TEMPERATURE	Operating: 0 to 50 °C / 32 to 122 °F Storage/Transport: -20 to 70 °C / -4 to 158 °F

INTERFACES

INTERFACES	RS-232 / USB / Keyboard Wedge / Wand Multi-Interface
------------	--

PHYSICAL CHARACTERISTICS

COLORS AVAILABLE	Light Green/Light Grey (Rubber/Plastic)
DIMENSIONS	18.1 x 7.1 x 10.0 cm / 7.1 x 2.8 x 3.9 in
ENCLOSURE	Disinfectant-Ready Enclosure Treated with Anti-Microbial Additives (ISO22196 and JISZ 2801 compliant models available)
WEIGHT	195.0 g / 6.9 oz

READING PERFORMANCE

IMAGE CAPTURE	Graphic Formats: BMP, JPEG, TIFF; Greyscale: 256, 16, 2
IMAGER SENSOR	Wide VGA: 752 x 480 pixels
LIGHT SOURCE	Aiming: 650 nm VLD
MOTION TOLERANCE	25 IPS
PRINT CONTRAST RATIO (MINIMUM)	25%
READING ANGLE	Pitch: +/- 40°; Roll (Tilt): 180°; Skew (Yaw): +/- 40°
READING INDICATORS	Beeper (Adjustable Tone); Datalogic 'Green Spot' Good Read Feedback; Good Read LED
RESOLUTION (MAXIMUM)	1D Linear: 0.102 mm / 4 mils; Data Matrix: 0.178 mm / 7 mils; PDF417: 0.102 mm / 4 mils

READING RANGES

TYPICAL DEPTH OF FIELD	Minimum distance determined by symbol length and scan angle. Printing resolution, contrast, and ambient light dependent. Code 39: 5 mils: 4.0 to 19.0 cm / 1.6 to 7.5 in Code 39: 10 mils: 1.0 to 30.0 cm / 0.4 to 11.8 in Data Matrix: 10 mils: 2.0 to 16.0 cm / 0.8 to 6.3 in Data Matrix: 15 mils: 0 to 23.6 cm / 0 to 9.3 in EAN-13: 13 mils: 1.5 to 40.0 cm / 0.6 to 15.7 in PDF417: 10 mils: 0.5 to 22.0 cm / 0.2 to 8.6 in QR Code: 10 mils: 3.0 to 12.5 cm / 1.2 to 4.9 in
------------------------	--

SAFETY & REGULATORY

AGENCY APPROVALS	The product meets necessary safety and regulatory approvals for its intended use. The Quick Reference Guide for this product can be referred to for a complete list of certifications.
ENVIRONMENTAL COMPLIANCE	Complies to China RoHS; Complies to EU RoHS
LASER CLASSIFICATION	Caution Laser Radiation - Do not stare into beam; IEC 60825 Class 2

UTILITIES

DATALOGIC ALADDIN™	Datalogic Aladdin configuration program is available for download at no charge.
OPOS / JAVAPOS	JavaPOS Utilities are available for download at no charge. OPOS Utilities are available for download at no charge.
REMOTE HOST DOWNLOAD	Lowers service costs and improves operations: GD4410

WARRANTY

WARRANTY	5-Year Factory Warranty
----------	-------------------------

DATALOGIC ADC'S DISINFECTANT-READY ENCLOSURES FOR HEALTHCARE

Datalogic ADC offers bar code readers designed specifically for the healthcare industry with Disinfectant-Ready enclosures treated with anti-microbial additives that can help fight against the spreading of germs. This is particularly important if the scanner is traveling room-to-room on a medication cart with a nurse. The Disinfectant-Ready enclosures can withstand daily cleaning with harsh chemical cleaning solutions commonly used in a healthcare environment.



PRODUCT	CHEMICAL CONTENT
Sani-Cloth® HB, Sani-Cloth® Plus, Super Sani-Cloth®	Quaternary Ammonium Chloride solution
Hepacide Quat II	Virucidal disinfectant cleaner
Alcohol Wipes	70% Isopropyl Alcohol
CaviWipes™	Isopropanol 10-20%; Ethylene Glycol Monobutyl Ether 1-5%
Virex® 256	n-Alkyl Dimethyl Benzyl Ammonium Chloride; Didecyl Dimethyl Ammonium Chloride
409® Glass and Surface Cleaner	n-Alkyl Dimethyl Benzyl Ammonium Chloride; n-Propoxypropanol
Windex® Blue	Isopropyl Alcohol
Clorox® Bleach	Sodium Hypochlorite; Sodium Hydroxide
100% Gentle dish soap and water	

REFER TO THE DEVICE INSTRUCTION MANUAL FOR PROPER CLEANING METHODS WHEN USING THESE CHEMICALS. DISINFECTANTS SHOULD NOT BE SPRAYED OR Poured ONTO THE SCANNER UNIT. THE SCANNERS MUST ALWAYS BE WIPED DRY AFTER DISINFECTING.

CORDLESS COMMUNICATIONS

DATALOGIC STAR CORDLESS SYSTEM™	Effective Radiated Power: 433.92 MHz: < 10 mW; 910 MHz: < 1 mW Multi-Point Configuration: Max. Readers per Radio Receiver: 16 Point-to-Point Configuration Radio Frequency: 433.92 MHz; 910 MHz Two Way Communications
---------------------------------	--

DECODING CAPABILITY

1D / LINEAR CODES	Autodiscriminates all standard 1D codes including GS1 DataBar™ linear codes.
2D CODES	Aztec Code; China Han Xin Code; Data Matrix; MaxiCode; QR Code
POSTAL CODES	Australian Post; China Post; IMB; Japanese Post; KIX Post; Korea Post; Planet Code; Postnet; Royal Mail Code (RM4SCC)
STACKED CODES	EAN/JAN Composites; GS1 DataBar Composites; GS1 DataBar Expanded Stacked; GS1 DataBar Stacked; GS1 DataBar Stacked Omnidirectional; MacroPDF; MicroPDF417; PDF417; UPC A/E Composites

ELECTRICAL

BATTERY	Battery Type: Lithium-Ion, 2100 mAh; Charge Time: External Power: 4 Hours @ 12 VDC; Reads per Charge: 60,000
CRADLE INDICATOR LEDS	Battery Charging (Red); Charge Completed (Green); Power/Data (Yellow)
CURRENT	Charging (Typical): < 8 W; Standby/Idle (Typical): < 2.5 mA @ 5 VDC
INPUT VOLTAGE	4.75 - 14.0 VDC +/- 5%

ENVIRONMENTAL

AMBIENT LIGHT	0 - 100,000 lux
ESD PROTECTION (AIR DISCHARGE)	16 kV
HUMIDITY (NON-CONDENSING)	0 - 90%
PARTICULATE AND WATER SEALING	IP52
TEMPERATURE	Operating: 0 to 50 °C / 32 to 122 °F Storage/Transport: -20 to 70 °C / -4 to 158 °F

INTERFACES

INTERFACES	RS-232 / USB / Keyboard Wedge / Wand Multi-Interface
------------	--

PHYSICAL CHARACTERISTICS

COLORS AVAILABLE	Light Green/Light Grey (Rubber/Plastic)
DIMENSIONS	Cradle: 18.6 x 9.9 x 5.6 cm / 7.2 x 3.9 x 2.2 in Reader: 18.1 x 7.1 x 10.0 cm / 7.1 x 2.8 x 3.9 in
ENCLOSURE	Disinfectant-Ready Enclosure Treated with Anti-Microbial Additives
WEIGHT	Cradle: 246.0 g / 8.7 oz; Reader: 245.0 g / 8.6 oz

READING PERFORMANCE

IMAGER SENSOR	Wide VGA: 752 x 480 pixels
LIGHT SOURCE	Aiming: 650 nm VLD
MOTION TOLERANCE	25 IPS
PRINT CONTRAST RATIO (MINIMUM)	25%
READING ANGLE	Pitch: +/- 40°; Roll (Tilt): 360°; Skew (Yaw): +/- 40°
READING INDICATORS	Beeper (Adjustable Tone); Datalogic 'Green Spot' Good Read Feedback; Good Read LED
RESOLUTION (MAXIMUM)	1D Linear: 0.102 mm / 4 mils; Data Matrix: 0.178 mm / 7 mils; PDF417: 0.127 mm / 5 mils

READING RANGES

TYPICAL DEPTH OF FIELD	Minimum distance determined by symbol length and scan angle. Printing resolution, contrast, and ambient light dependent. Code 39: 5 mils: 4.0 to 19.0 cm / 1.6 to 7.5 in Code 39: 10 mils: 1.0 to 30.0 cm / 0.4 to 11.8 in Data Matrix: 10 mils: 2.0 to 16.0 cm / 0.8 to 6.3 in Data Matrix: 15 mils: 0 to 23.6 cm / 0 to 9.3 in EAN-13: 13 mils: 1.5 to 40.0 cm / 0.6 to 15.7 in PDF417: 10 mils: 0.5 to 22.0 cm / 0.2 to 8.6 in QR Code: 10 mils: 3.0 to 12.5 cm / 1.2 to 4.9 in
------------------------	--

SAFETY & REGULATORY

AGENCY APPROVALS	The product meets necessary safety and regulatory approvals for its intended use. The Quick Reference Guide for this product can be referred to for a complete list of certifications.
ENVIRONMENTAL COMPLIANCE LED CLASSIFICATION	Complies to China RoHS; Complies to EU RoHS Caution Laser Radiation - Do not stare into beam; IEC 60825 Class 2

UTILITIES

DATALOGIC ALADDIN™	Datalogic Aladdin configuration program is available for download at no charge.
OPOS / JAVAPOS	JavaPOS Utilities are available for download at no charge. OPOS Utilities are available for download at no charge.
REMOTE HOST DOWNLOAD	Lowers service costs and improves operations: BC4010

WARRANTY

WARRANTY	3-Year Factory Warranty
----------	-------------------------

CORDLESS COMMUNICATIONS

BLUETOOTH® WIRELESS TECHNOLOGY Piconet: Max. Readers per Radio Receiver: 7 (when using an external Piconet dongle); Profiles: SPP (Serial Port Profile) Protocol: Bluetooth 2.0 Certified Class 2 Radio Frequency: 2.4 GHz Radio Range (Open Air): 30.0 m / 98.4 ft; Range distances are measured using the base station. Range with connection to other Bluetooth peripherals may show different results. Security: Data Encryption; Scanner Authentication

DECODING CAPABILITY

1D / LINEAR CODES Autodiscriminates all standard 1D codes including GS1 DataBar™ linear codes.
2D CODES Aztec Code; China Han Xin Code; Data Matrix; MaxiCode; QR Code
POSTAL CODES Australian Post; China Post; IMB; Japanese Post; KIX Post; Korea Post; Planet Code; Postnet; Royal Mail Code (RM4SCC)
STACKED CODES EAN/JAN Composites; GS1 DataBar Composites; GS1 DataBar Expanded Stacked; GS1 DataBar Stacked; GS1 DataBar Stacked Omnidirectional; MacroPDF; MicroPDF417; PDF417; UPC A/E Composites

ELECTRICAL

BATTERY Battery Type: Lithium-Ion, 2100 mAh; Charge Time: External Power: 4 Hours @ 12 VDC; Reads per Charge: 50,000
CRADLE INDICATOR LEDS Battery Charging (Red); Charge Completed (Green); Power/Data (Yellow)
CURRENT Charging (Typical): < 8 W; Operating (Typical): < 2.5 W @ 5 VDC; Standby/Idle (Typical): < 2.5 mA @ 5 VDC
INPUT VOLTAGE 4.5 - 14.0 VDC +/- 5%

ENVIRONMENTAL

AMBIENT LIGHT 0 - 100,000 lux
ESD PROTECTION (AIR DISCHARGE) 16 kV
HUMIDITY (NON-CONDENSING) 0 - 90%
PARTICULATE AND WATER SEALING IP52
TEMPERATURE Operating: 0 to 50 °C / 32 to 122 °F Storage/Transport: -20 to 70 °C / -4 to 158 °F

INTERFACES

INTERFACES RS-232 / USB / Keyboard Wedge / Wand Multi-Interface

PHYSICAL CHARACTERISTICS

COLORS AVAILABLE Light Green/Light Grey (Rubber/Plastic)
DIMENSIONS Cradle: 18.6 x 9.9 x 5.6 cm / 7.25 x 3.9 x 2.2 in Reader: 18.1 x 7.1 x 10.0 cm / 7.1 x 2.8 x 3.9 in Disinfectant-Ready Enclosure Treated with Anti-Microbial Additives (ISO22196 and JISZ 2801 compliant models available)
ENCLOSURE Cradle: 246.0 g / 8.7 oz; Reader: 245.0 g / 8.6 oz
WEIGHT

READING PERFORMANCE

IMAGE CAPTURE Graphic Formats: BMP, JPEG, TIFF; Greyscale: 256, 16, 2
IMAGER SENSOR Wide VGA: 752 x 480 pixels
LIGHT SOURCE Aiming: 650 nm VLD
MOTION TOLERANCE 25 IPS
PRINT CONTRAST RATIO (MINIMUM) 25%
READING ANGLE Pitch: +/- 40°; Roll (Tilt): 360°; Skew (Yaw): +/- 40°
READING INDICATORS Beeper (Adjustable Tone); Datalogic 'Green Spot' Good Read Feedback; Good Read LED
RESOLUTION (MAXIMUM) 1D Linear: 0.102 mm / 4 mils; Data Matrix: 0.178 mm / 7 mils; PDF417: 0.127 mm / 5 mils

READING RANGES

TYPICAL DEPTH OF FIELD Minimum distance determined by symbol length and scan angle. Printing resolution, contrast, and ambient light dependent.
 Code 39: 5 mils: 4.0 to 19.0 cm / 1.6 to 7.5 in
 Code 39: 10 mils: 1.0 to 30.0 cm / 0.4 to 11.8 in
 Data Matrix: 10 mils: 2.0 to 16.0 cm / 0.8 to 6.3 in
 Data Matrix: 15 mils: 0 to 23.6 cm / 0 to 9.3 in
 EAN-13: 13 mils: 1.5 to 40.0 cm / 0.6 to 15.7 in
 PDF417: 10 mils: 0.5 to 22.0 cm / 0.2 to 8.6 in
 QR Code: 10 mils: 3.0 to 12.5 cm / 1.2 to 4.9 in

SAFETY & REGULATORY

AGENCY APPROVALS The product meets necessary safety and regulatory approvals for its intended use. The Quick Reference Guide for this product can be referred to for a complete list of certifications.
ENVIRONMENTAL COMPLIANCE Complies to China RoHS; Complies to EU RoHS
LED CLASSIFICATION Caution Laser Radiation - Do not stare into beam; IEC 60825 Class 2

UTILITIES

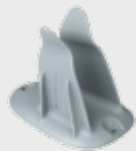
DATALOGIC ALADDIN™ Datalogic Aladdin configuration program is available for download at no charge.
OPOS / JAVAPOS JavaPOS Utilities are available for download at no charge. OPOS Utilities are available for download at no charge.
REMOTE HOST DOWNLOAD Lowers service costs and improves operations: BC4010

WARRANTY

WARRANTY 3-Year Factory Warranty

All Products

Mounts/Stands



▪ 11-0362: Holder, Multi-Purpose, Grey



▪ HLD-G040-WH: Desk/Wall Holder, G040, White



▪ STD-AUTO-G040-WH: Smart Stand, G040, White



▪ STD-G040-WH: Basic Stand, G040, White

Cordless Products

Batteries/Battery Chargers

- RBP-GM40 Removable Battery Pack

Base Stations/Chargers

- GRYPHON™ | GM4400-HC**
- BC4030-HC-433 / BC4031-HC-910: Base/Charger, 433/910 MHz, Multi-Interface, White, Healthcare
 - CHR-GM40-WH: Charging Only Base Station, White

GRYPHON™ | GBT4400-HC

- BC4030-HC-BT: Base/Charger, Standard Multi-Interface, Healthcare
- CHR-GM40-WH: Charging Only Base Station, White

