

SCANPAL EDA52

MOBILE COMPUTER

Accessories Guide

TABLE OF CONTENTS

1 Chargers

1 Basic Chargers

1 Non-Booted Universal Docks

1 Battery Chargers

2 Mobile

2 Mobile accessories

3 Power Supply

3 Battery

3 Power Adapter and Plugs

CHARGERS

Basic Chargers



EDA50-HB-R



EDA52-HB-1
EDA52-HB-2
EDA52-HB-3
EDA52-HB-5



EDA50-CB-1
EDA50-CB-2
EDA50-CB-3

Single Charging Dock

Charging dock for ScanPal™ EDA50/EDA50HC/EDA51, EDA52/EDA52HC charging needs to be worked with EDA52-ADC. Compatible with EDA51 scan handle. Does not include charging cable; cable (CBL-500-120-S00) and power adapter and plugs (50130570-001) must be ordered separately.

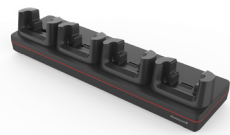
Single Charging Homebase

Charging Homebase for ScanPal EDA52 terminal and battery. Kit contains power supply and power cord. (-1 for U.S., -2 for Europe, -3 for UK, and -5 for AU). Compatible with EDA52 scan handle.

Quad Bay Charging Base

Quad bay charging base for ScanPal EDA50/EDA50hc/EDA51, EDA52/EDA52HC charging needs to be worked with EDA52-ADC (-1 for U.S., -2 for Europe, -3 for UK). Kit contains power supply and power cord.

Non-Booted Universal Docks (for 6-pin models only)



EDA52-NB-UVN-0
EDA52-NB-UVN-2



EDA52-EB-UVN-0
EDA52-EB-UVN-2



EDA52-DB-UVN-0
EDA52-DB-UVN-2

EDA52 Non-booted Net Base

EDA52 Non-booted Net base for Ethernet communications and recharging up to four computers. Kit includes net base and power cord (-0 no power cord, -2 for Europe)

EDA52 Non-booted Ethernet Base

EDA52 Non-booted Ethernet base for recharging one computer and Ethernet communications. Kit includes Ethernet home base and power cord (-0 no power cord, -2 for Europe)

EDA52 Non-booted Display Dock

EDA52 Non-booted Display Dock. For recharging one computer, connection with an external display, extending I/O for HDMI, Ethernet communications. Kit includes display base and power cord (-0 no power cord, -2 for Europe)

Battery Chargers



EDA52-QBC-1
EDA52-QBC-2
EDA52-QBC-3
EDA52-QBC-5

Quad Battery Charger

Quad battery charger for ScanPal EDA52/52HC batteries (-1 for U.S., -2 for Europe, -3 for UK, -5 for Aus). Kit contains power supply and power cord.

MOBILE

Mobile accessories



EDA52-WS-10PK

Wrist Strap

Wrist strap for ScanPal EDA52 (10pcs/kit)



EDA52-HS-10PK

Hand Strap

Hand strap for ScanPal EDA52 (10pcs/kit)



EDA52-SP-10PK

Screen Film

Screen film for ScanPal EDA52 (10pcs/kit)



EDA52-RB-0

Rubber Boot

Rubber boot for ScanPal EDA52



EDA52-SH-R

Scan Handle

Scan handle for ScanPal EDA52. Compatible with EDA52 hand strap.



EDA52-ADC

Backwards Adapter Cup

EDA52 backwards adapter to work with EDA50/51 accessories.



EDA52-SN-USB-0

USB Cup (6-pin models only)

EDA52 Snap on USB cup for standard USB port



EDA52-UCP-N

Universal Cup (6-pin models only)

EDA52 Universal Cup to be work with CT40 series universal docks



IH25-BR-5

RFID Bracket

IH25 bracket for ScanPal EDA52 Terminal without rub-boots

POWER SUPPLY

Battery



50172021-001

Standard Battery Pack

Standard battery pack for ScanPal EDA52 (Li-ion, 3.8V, 4500 mAh) (included with each terminal)

Power Adapter and Plugs



50130570-001

Power Adapter and Plugs

Power adapter and plugs for ScanPal EDA50/EDA50hc/EDA50K/EDA51/EDA52; includes US, EU, UK, and India plugs (part of the box content for each terminal).

For more information

www.honeywellaidc.com

**Honeywell Safety and
Productivity Solutions**

300 S Tryon St Suite 500
Charlotte, NC 28202
800-582-4263
www.honeywell.com

EDA52 Accessories Guide | Rev A | 04/21
© 2021 Honeywell International Inc.

**THE
FUTURE
IS
WHAT
WE
MAKE IT**

Honeywell