

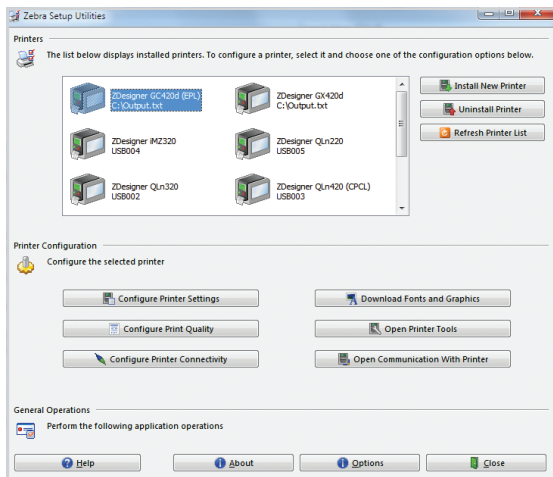


Zebra Setup Utilities

PRINTER SETUP MADE SIMPLE

By enabling you to quickly and easily configure select Zebra® high-performance, midrange, desktop and mobile printers, the free Zebra Setup Utilities will enhance your printer experience right out of the box.

Easy-to-use wizards quickly guide you through configuration, whether you're adding a new printer, moving an existing printer to a new location or looking to add new capabilities. Printer setup and configuration is now click-simple — no need to create and send complex command scripts.



Download Your Free Zebra Setup Utilities
at www.zebra.com/setup.

Just Click to Configure!

- Printer Settings Wizard — Intuitive wizard steps you through the printer setting configuration process. Quick and easy!
- Print Quality Wizard — New, innovative tool helps you set the best speed and darkness combination for your media.
- Connectivity Wizard — Guides you through configuring network and / or Bluetooth® connectivity settings, simplifying a complex task.
- Preloaded Microsoft® certified Windows® driver — Automatically installs printer driver when using USB plug-and-play. You don't have to do a thing.
- Quick Tools — Quick access to the most common printer diagnostic tools makes it simple to test / confirm printer configurations and control printer functions.
- Font and Graphics Downloader — Saves font and graphic details for reuse or later editing.
- File Editor and Terminal Window — Create, Edit and Print commands from a single window eliminating the need for separate editing and communication applications.

Zebra Setup Utilities functions on a variety of Windows operating systems

- Windows Vista®
- Windows 7
- Windows 8
- Windows 8.1
- Windows 10
- Windows Server 2008 R2
- Windows Server 2012 R2

For more information about Zebra Setup Utilities, visit www.zebra.com/setup or access our global contact directory at www.zebra.com/contact